

JINDALEADER

VOLUME 14, No. 4

MONTHLY NEWS FROM THE HOOKER CENTENARY GARDEN SUBURBS

MAY, 1979

Y-WEST TO START BUILDING

THE Y.M.C.A. has announced that construction of stage 1 of its Youth and Community Centre is about to start.

Y-West, at Andaman Street, Jamboree Heights will be built in three stages. Stage 1 will contain a gymnasium (large enough to accommodate badminton) 3 squash courts, change rooms, saunas, meeting rooms, a shop and office space and off-street parking.

Excluding furniture, fittings and land, the cost of Stage 1 will be some \$400,000. The total project cost is estimated at \$1,000,000.

A Steering Committee of local residents has brought the project to this point of commencement and is expected to take 26 weeks to complete.

300 children now meet and Stage 1 of Y-West provides for expansion of the existing programmes for children plus facilities for housewives, businessmen and women, retired people, the handicapped and some school programmes.

However, funds are still desperately needed to finish, and furnish Stage 1.

The Steering Committee will gratefully accept all cash donations however small and administrative assistance will also be welcomed. Cheques or Money Orders should be made payable to "Brisbane and Metropolitan Y.M.C.A. Youth Club" in order that a tax deductible receipt can be issued. Donations can be mailed to Y.M.C.A. Youth and Community Centre, 444 Ann Street, Brisbane, 4000, or left at Hooker Centenary office.

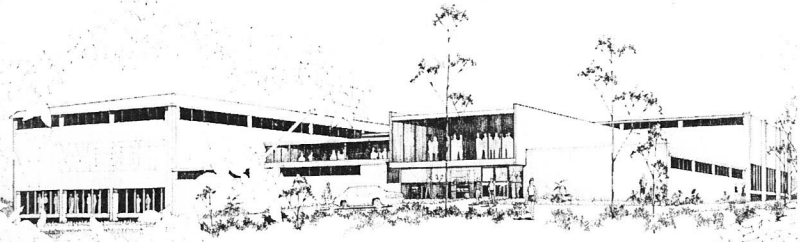
The Centenary Suburbs Garden Competition 1979



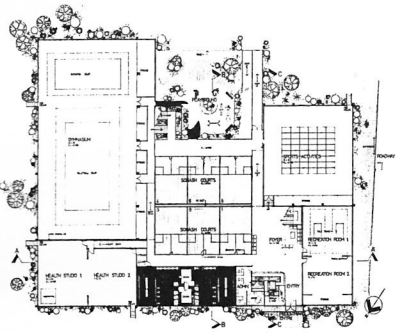
A reminder that now is the time for interested persons who wish to enter their garden in the Spring Garden Competition to start preparing for the great event.

This is an annual event and valuable prizes are offered. Last year there were close to 50 entries.

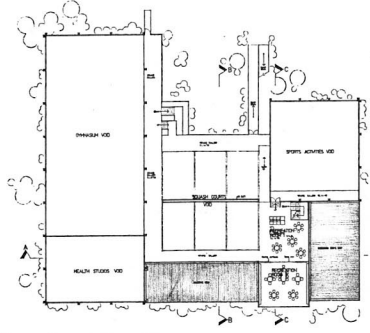
The competition is open to all residents of Jindalee, Westlake, Mt. Ommaney, Jamboree Heights, Riverhills and Middle Park. It is divided into seven classes so there will no doubt be a class to cater for your garden.



Perspective drawing of the completed Y-West Youth & Community Centre, Jamboree Heights.



Lower Level Floor Plan



Upper Level Floor Plan

The areas of Stage 1 construction (which is planned to commence in April, 1979), have been shaded on the above floor plan. This Centre will provide community services to the residents of the Western suburbs of Brisbane.

Lyn Mayne's "Tips on Sewing" Book

NOW AVAILABLE AT
"BOOKS OF KENMORE"
K.WEST FABRICS
 (Kenmore Shopping Village)

CABINET MAKER

for your CUSTOM BUILT Kitchens, Bathrooms, Wall-Units and Wardrobes consult the SPECIALIST

ELAN BUILT-IN FURNITURE

For FREE QUOTES and Advice

Telephone **379 3051**
 at any time

CUSTOMER SATISFACTION GUARANTEED

*NOTE— Custom Built is less expensive than Modular Systems.